

# MAP OF ALL FIELDS

## Dutchmen Field

6363 Frenchs Mill Rd  
Altamont, NY 12009

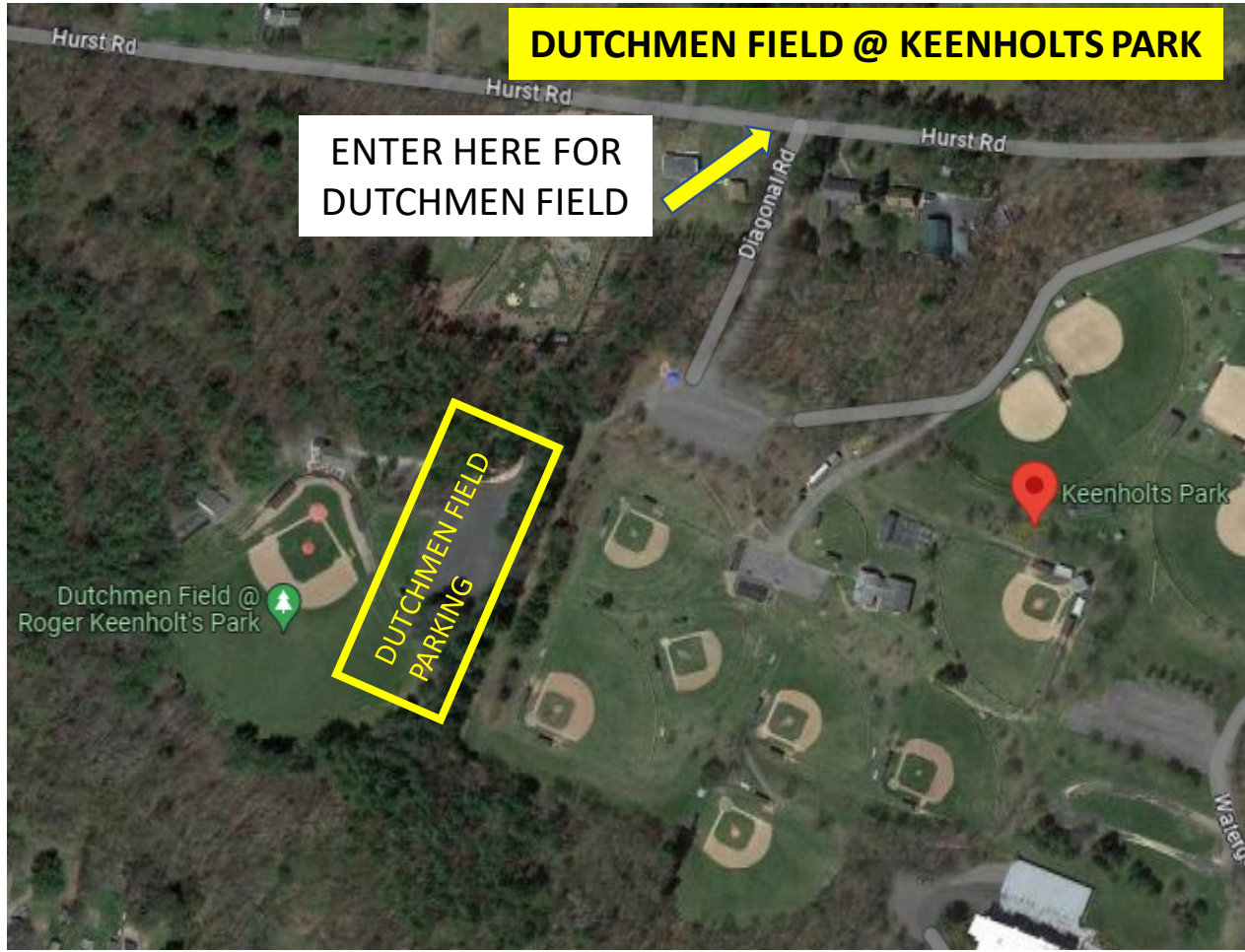
## Schenectady Central Park

500 Iroquois Way  
Schenectady NY 12309

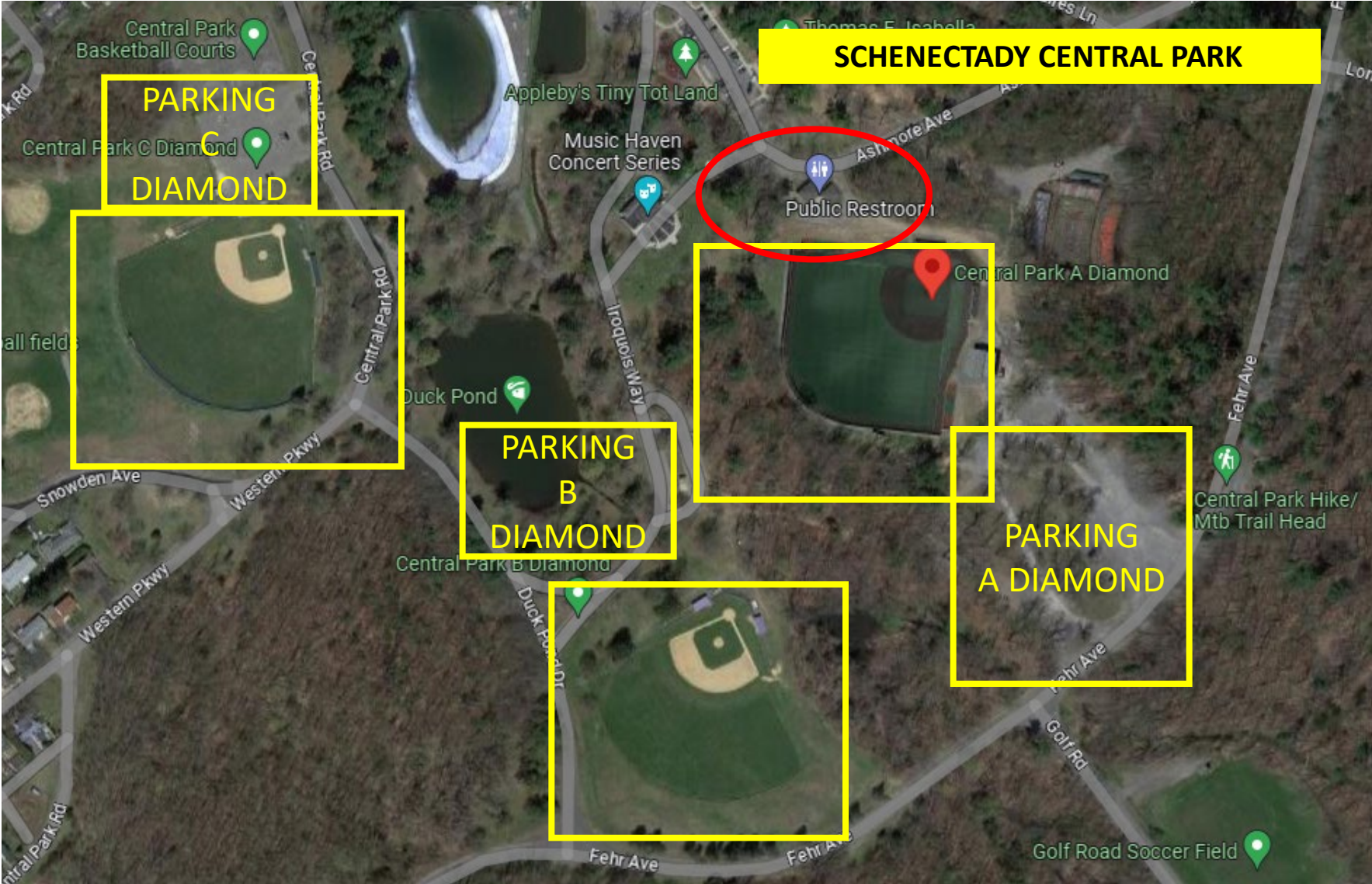
## Line Drive Baseball Fields

Line Dr  
Bethlehem, NY 12054

<u>Field Name</u>	<u>GPS Address</u>	<u>Directions &amp; Parking</u>
Dutchmen Field	6355 French's Mill Rd Altamont NY 12009	Take Rt 146 to French's Mill Rd. Stay on French's Mill Rd beyond Town Transfer Station and road name changes to Hurst Rd. Take the third entrance into the park on Diagonal Rd. On the right side of first parking lot there is a driveway through the woods. Follow that to baseball stadium.
Central Park A Diamond	500 Iroquois Way Schenectady NY 12309	If entering park from Golf Rd, turn right on Fehr Ave. Drive a couple hundred feet and there will be a stone parking lot on your right.
Central Park B Diamond	500 Iroquois Way Schenectady NY 12309	If entering park from Golf Rd, turn left on Fehr Ave. Drive a 1/8 mile and you will see field on your <b>RIGHT</b> with a parking lot near a pond. This is the B diamond.
Central Park C Diamond	500 Iroquois Way Schenectady NY 12309	If entering park from Golf Rd, turn left on Fehr Ave. Drive a 1/4 mile and you will see field on your <b>LEFT</b> with a parking lot. (Note: you have to pass the B diamond on the <b>RIGHT</b> before you hit the C diamond. Make sure you are at "C" diamond.)
Line Drive Baseball Fields	Line Dr. Delmar NY 12054	Plenty of parking spaces in the park. Fields and parking lots directly on Delmar Bypass.





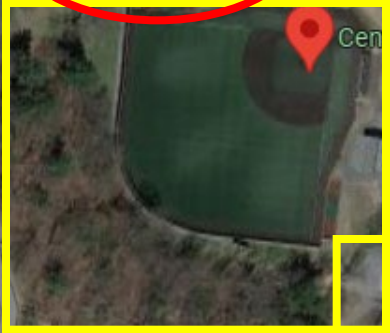


**SCHENECTADY CENTRAL PARK**

**PARKING  
C  
DIAMOND**



**PARKING  
B  
DIAMOND**



**PARKING  
A  
DIAMOND**

