

# ALL 11U/12U FIELDS

Keenholts Park – Fields 1, 4, 5

Line Drive Baseball Fields - Field 12

6363 Frenchs Mill Rd  
Altamont, NY 12009

Line Dr  
Bethlehem, NY 12054

<b>Field Name</b>	<b>GPS Address</b>	<b>Directions &amp; Parking</b>
Keenholts Field 1	6355 French's Mill Rd Altamont NY 12009	For Fields 1-4, the best entrance is the first entrance (Watergate Dr). Take Rt 146 then make right on to French's Mill Rd. Make a quick left at the animal shelter onto Watergate Dr. That driveway leads you right to parking lots that are closest to fields 1 - 4.
Keenholts Field 4	6355 French's Mill Rd Altamont NY 12009	
Keenholts Field 5	6355 French's Mill Rd Altamont NY 12009	
Line Drive Baseball Fields	Line Dr. Delmar NY 12054	Plenty of parking spaces in the park. Fields and parking lots directly on Delmar Bypass.

# KEENHOLTS PARK

ENTER HERE FOR  
FIELD 5 &  
DUTCHMEN FIELD

ENTER HERE FOR  
FIELDS 1 - 4

DUTCHMEN FIELD  
PARKING

FIELD 5  
PARKING

Emergency  
Vehicles  
Only

NO PARKING

Additional  
PARKING

FIELD 1 - 4  
PARKING

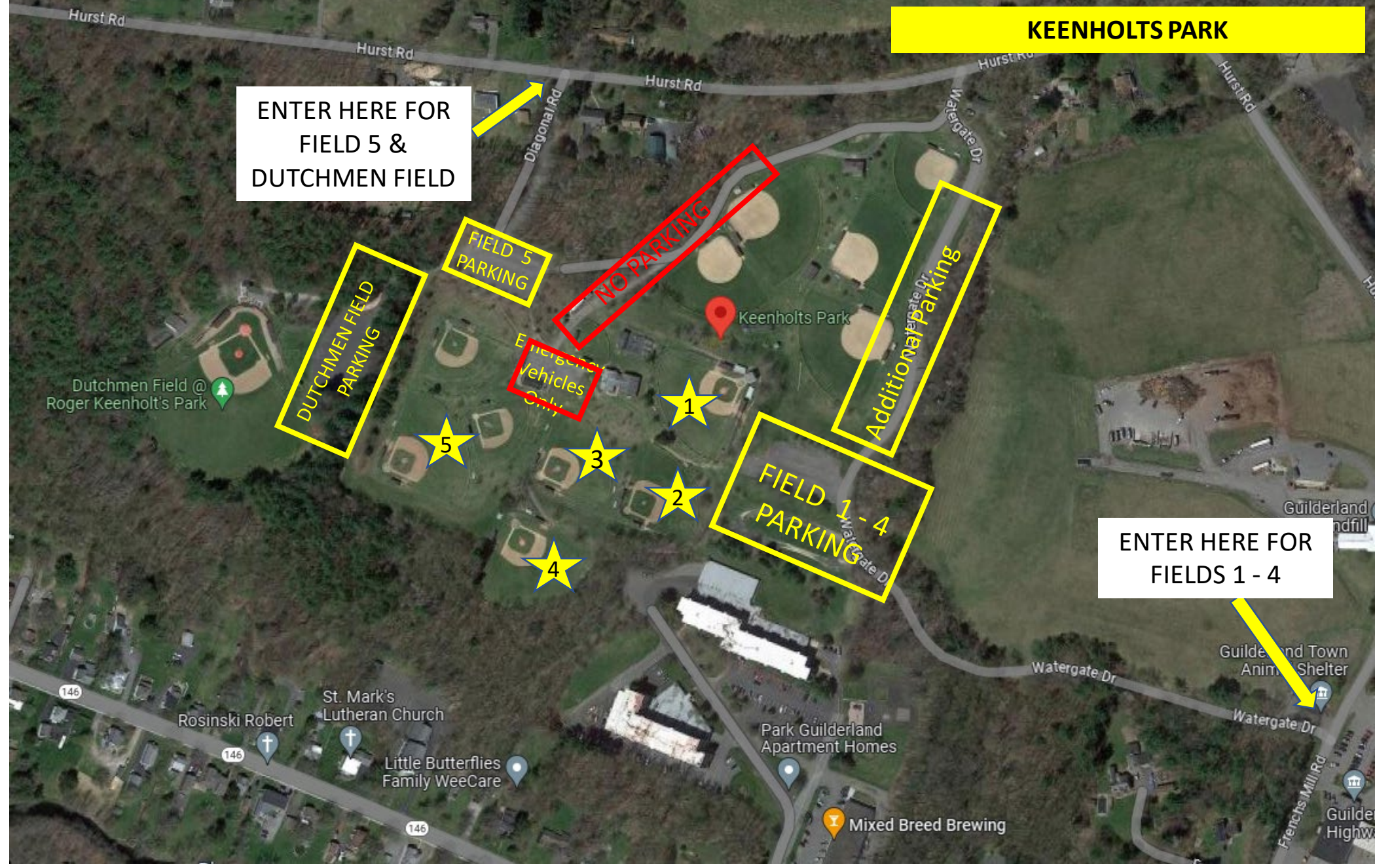
5

3

2

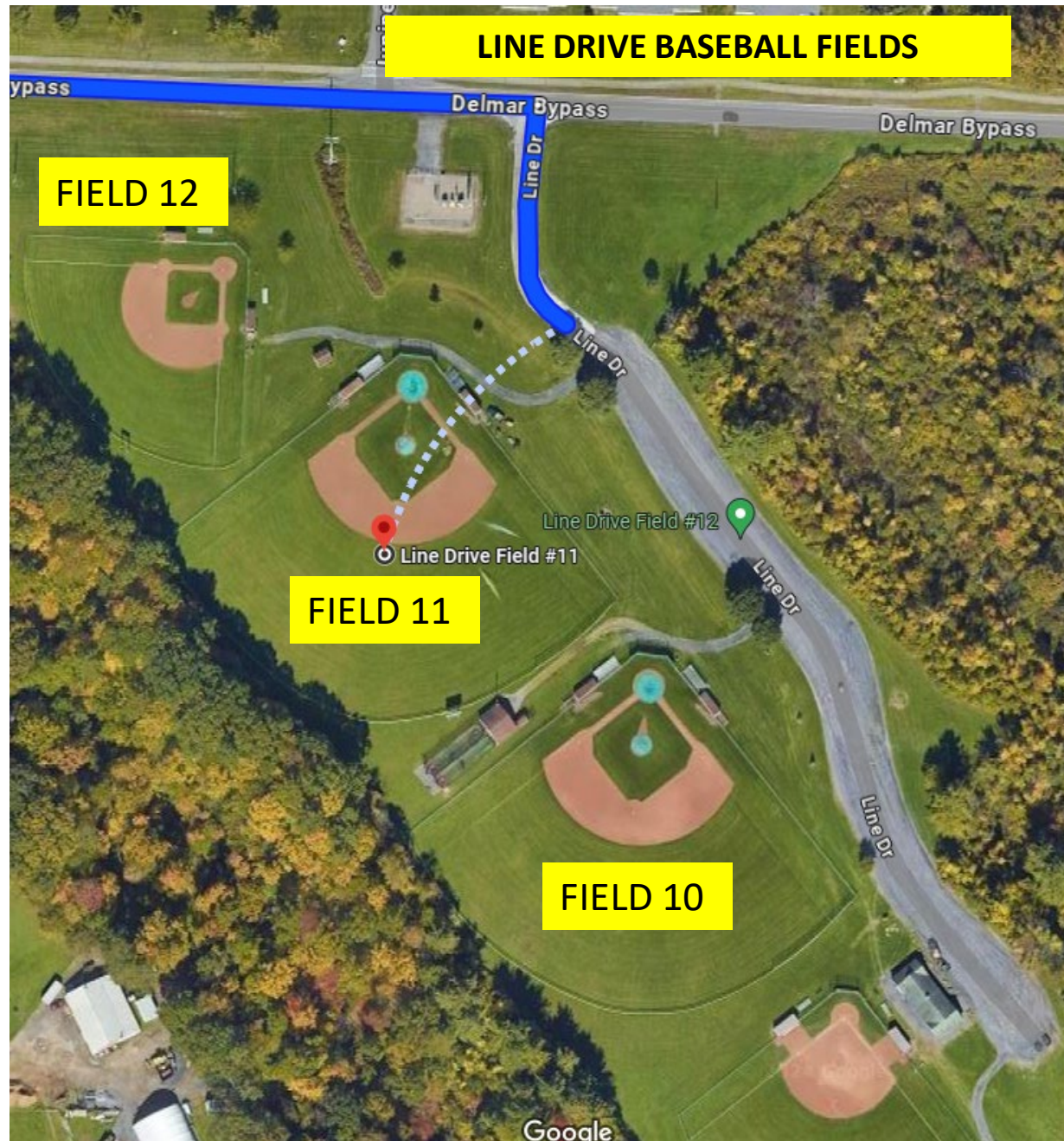
4

1





# LINE DRIVE BASEBALL FIELDS



FIELD 12

FIELD 11

FIELD 10

Line Drive Field #11

Line Drive Field #12

Google