

MAP OF ALL FIELDS

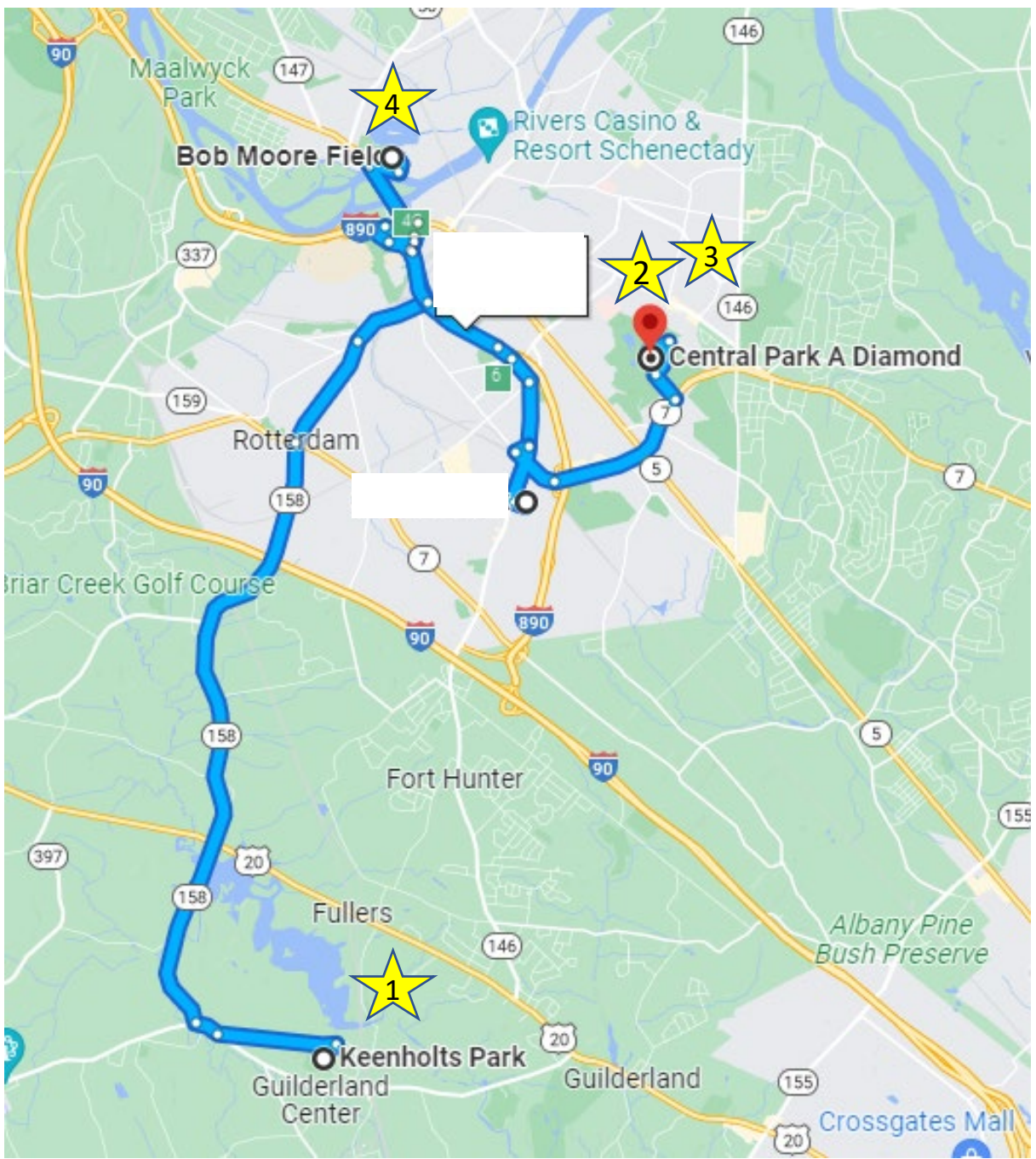
1 Keenholts Park & Dutchmen Field
6363 Frenchs Mill Rd
Altamont, NY 12009

2 Central Park A Diamond
500 Iroquois Way
Schenectady NY 12309

3 Central Park C Diamond
500 Iroquois Way
Schenectady NY 12309

4 Bob Moore Field (Collins Park)
Kiwanis Way
Scotia, NY 12302

Specific Maps of Keenholts Park and Schenectady Central Park on next pages



KEENHOLTS PARK

ENTER HERE FOR
FIELD 5 &
DUTCHMEN FIELD

DUTCHMEN FIELD
PARKING

FIELD 5
PARKING

NO PARKING


Emergency
Vehicles
Only

Additional Parking

FIELD 1 - 4
PARKING

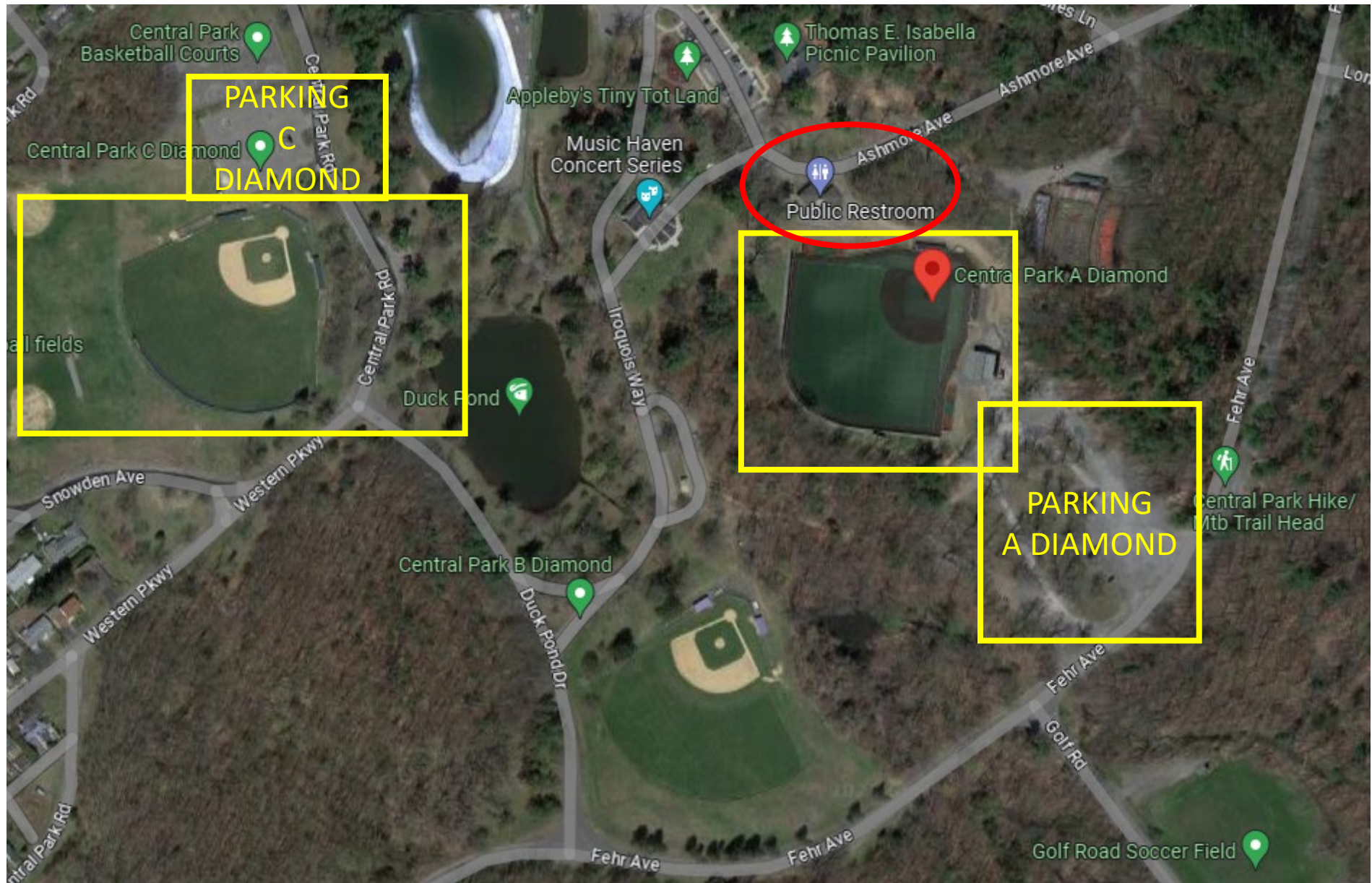
ENTER HERE FOR
FIELDS 1 - 4

Post Game Adult Beverages



Mixed Breed Brewing

Parking instructions on next page



PARKING

DIAMOND

PARKING
A
DIAMOND

Field Name	GPS Address	Parking
Keenholtz Field 1	6355 French's Mill Rd Altamont NY 12009	For Fields 1-4, the best entrance is the first entrance (Watergate Dr). Take Rt 146 then make right on to French's Mill Rd. Make a quick left at the animal shelter onto Watergate Dr. That driveway leads you right to parking lots that are closest to fields 1 - 4.
Keenholtz Field 2	6355 French's Mill Rd Altamont NY 12009	
Keenholtz Field 3	6355 French's Mill Rd Altamont NY 12009	
Keenholtz Field 4	6355 French's Mill Rd Altamont NY 12009	
Keenholtz Field 5	6355 French's Mill Rd Altamont NY 12009	
Dutchmen Field	6355 French's Mill Rd Altamont NY 12009	Take Rt 146 to French's Mill Rd. Stay on French's Mill Rd beyond Town Transfer Station and road name changes to Hurst Rd. Take the third entrance into the park on Diagonal Rd. Park in lot on top of hill over looking fields.
Central Park A Diamond	500 Iroquois Way Schenectady NY 12309	Take Rt 146 to French's Mill Rd. Stay on French's Mill Rd beyond Town Transfer Station and road name changes to Hurst Rd. Take the third entrance into the park on Diagonal Rd. On the right side of first parking lot there is a driveway through the woods. Follow that to baseball stadium.
Central Park C Diamond	500 Iroquois Way Schenectady NY 12309	If entering park from Golf Rd, turn right on Fehr Ave. Drive a couple hundred feet and there will be a stone parking lot on your right.
Scotia - Bob Moore	Kiwanis Way, Schenectady NY 12302	If entering park from Golf Rd, turn left on Fehr Ave. Drive a 1/4 mile and you will see field on your LEFT with a parking lot. (Note: you have to pass the B diamond on the RIGHT before you hit the C diamond. Make sure you are at "C" diamond.)
		Drive down Schonowee Ave. Pass Jumpin Jacks food stand. Just past that on your left is Kiwanis Way. Multiple parking lots right inside Collins Park near the baseball fields.